

Threshold Plate Information

RP19



A heavy duty [threshold plate](#) with ribbed profile and integral sill gaskets.

Can be used in conjunction with Raven [door bottom seals](#) to prevent rain, draughts, noise and smoke infiltration.

RP19 has been designed to accommodate a concealed screw fix through the door jambs.

Location: Door sill.

Finish: Satin clear (silver) or bronze anodised aluminium (25µm).

Fixing: Screw fix. Colour matched zinc plated, cross recess head CSK S.T. screws supplied.

Seal: [RP404a](#) Grey flexible [PVC](#).

Sizes: Available in stock lengths.

Approvals

Access & Mobility NZ: NZ BC Compliance Doc. D1/AS1

1.3.2 


UK/EU: Approved Document M.

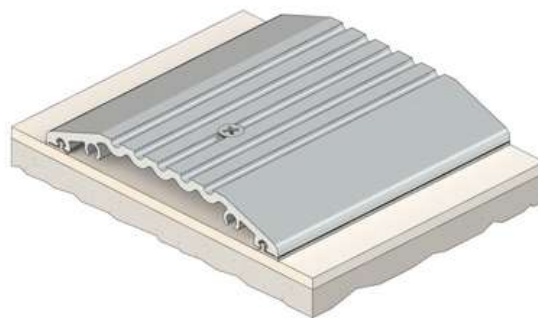
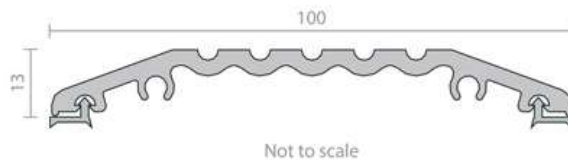
Fire AUS/NZ: NCC Spec. C3.4. AS1530.4 & AS/NZS 1905.1.

NZ BC Compliance Doc. C/AS1 6.19.2(a) & App. C6.1.1.

UK/EU: Approved Document B. BS 476 Pt. 20 & 22 (similar to BS EN 1634-1).

FRL & FRR-/240/30 

 when used with a BAL rated door bottom seal in accordance with AS 3959.



RP28



RP28 is a wide, heavy duty [threshold plate](#) with a ribbed profile and integral sill gaskets. They are ideal for use with [pivot hinge](#) doors.

Can be used in conjunction with Raven [door bottom seals](#) to prevent rain, draughts, noise and smoke infiltration.

Location: Door sill.

Finish: Satin clear (silver) or bronze anodised aluminium (25µm).

Fixing: Screw fix. Colour matched zinc plated, cross recess head CSK S.T. screws supplied.

Seal: [RP404a](#). Grey flexible [PVC](#).

Sizes: Available in stock lengths.

Approvals

Access & Mobility NZ: NZ BC Compliance Doc. D1/AS1

1.3.2.

UK/EU: Approved Document M.

Fire AUS/NZ: NCC Spec. C3.4. AS1530.4 & AS/NZS 1905.1.

NZ BC Compliance Doc. C/AS1 6.19.2(a) & App. C6.1.1.

UK/EU: Approved Document B. BS 476 Pt. 20 & 22 (similar to BS EN 1634-1).

FRL & FRR-/240/30 and FD120.

BAL SFZ when used with a BAL rated door bottom seal in accordance with AS 3959.



RP29



RP29 is a wide, heavy duty [threshold plate](#) with a ribbed profile and integral sill gaskets. They are ideal for use with [pivot hinge](#) doors.

Can be used in conjunction with Raven [door bottom seals](#) to prevent rain, draughts, noise and smoke infiltration.

Location: Door sill.

Finish: Satin clear (silver) or bronze anodised aluminium (25µm).

Fixing: Screw fix. Colour matched zinc plated, cross recess head CSK S.T. screws supplied.

Seal: [RP404a](#). Grey flexible [PVC](#).

Sizes: Available in stock lengths.

Approvals

Access & Mobility NZ: NZ BC Compliance Doc. D1/AS1

1.3.2

UK/EU: Approved Document M.

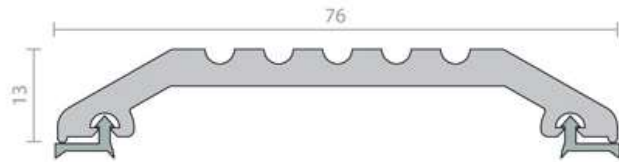
Fire AUS/NZ: NCC Spec. C3.4. AS1530.4 & AS/NZS 1905.1.

NZ BC Compliance Doc. C/AS1 6.19.2(a) & App. C6.1.1.

UK/EU: Approved Document B. BS 476 Pt. 20 & 22 (similar to BS EN 1634-1).

FRL & FRR-/240/30 and FD120

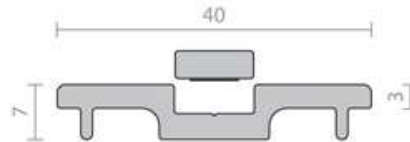
BAL when used with a BAL rated door bottom seal in accordance with AS 3959.



RP66



A flush fitting threshold plate designed for use on internal doors with carpeted floors. The RP66 can be used in conjunction with Raven [door bottom seals](#) such as the [RP38Si](#) to provide an optimum sealing surface as carpets can flatten and thus reduce sealing effectiveness. RP66 has concealed fixings with self adhesive aluminium insert.



Location: Door [sill](#) of internal doors with carpeted sills.

Finish: Satin clear (silver) anodised aluminium (25µm).

Fixing: Screw fix with self adhesive insert. Zinc plated, cross recess head CSK S.T. screws supplied.

Sizes: Available in stock lengths.

Approvals

Access & Mobility AUS/NZ: NCC D2.15 & D3.3. AS1428.1.
NZ BC Compliance Doc: D1/AS1 1.3.2.

UK/EU: Approved Document M.

Fire AUS/NZ: NCC Spec. C3.4. AS1530.4 & AS/NZS 1905.1.
NZ BC Compliance Doc: C/AS1 6.19.2(a) & App. C6.1.1.

UK/EU: Approved Document B. BS 476 Pt. 20 & 22 (similar to BS EN 1634-1).

FRL & FRR-/240/30.





A heavy duty threshold ramp with a ribbed design which can be positioned back to back to form a two way threshold ramp conforming to NCC Pt. D2.15 Thresholds (b).

Can be used in conjunction with Raven [door bottom seals](#) to prevent rain, draughts, noise and smoke infiltration. Suitable for use with most floor pivots.

Ideal for commercial shop fronts providing a neat ramp detail between carpets or tiles at door ways.

Can also be used to provide a ramped frame for internal door mats.

Location: Door [sill](#).

Finish: Satin clear (silver) or bronze anodised aluminium (25µm).

Fixing: Screw fix. Zinc plated, cross recess head CSK S.T. screws supplied.

Sizes: Available in stock lengths. Specify longer length than doorway to allow for neat installation around door frame.

Approvals

Cert. GVY1.R37913

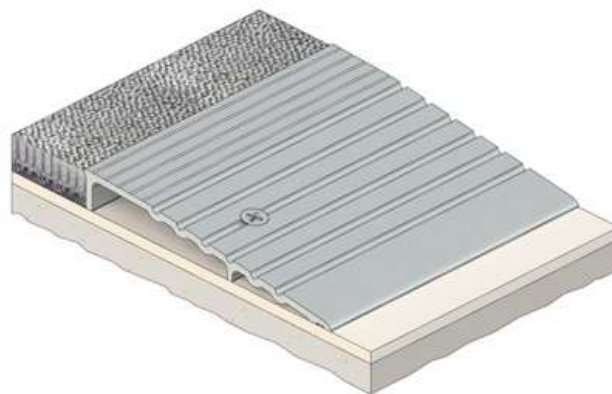
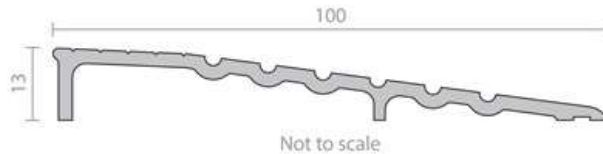
Access & Mobility AUS/NZ: NCC D2.15 & D3.3. AS1428.1. NZ BC Compliance Doc. D1/AS1 1.3.2. UK/EU: Approved Document M.

Fire AUS/NZ: NCC Spec. C3.4. AS1530.4 & AS/NZS 1905.1. NZ BC Compliance Doc. C/AS1 6.19.2(a) & App. C6.1.1.

UK/EU: Approved Document B. BS 476 Pt. 20 & 22 (similar to BS EN 1634-1).

FRL & FRR-/240/30

when used with a BAL rated door bottom seal in accordance with AS 3959.





A low profile [threshold plate](#) that is ideal for use in conjunction with Raven [door bottom seals](#) to prevent rain, draughts, noise and smoke infiltration.


Location: Door [sill](#).

Finish: Satin clear (silver) or bronze anodised aluminium (25µm).

Fixing: Screw fix or builders adhesive for concealed fixing (user determined). Colour matched zinc plated, cross recess head CSK S.T. screws supplied.

Sizes: Available in stock lengths.

Approvals

 Cert. GVYI.R37913


Access & Mobility AUS/NZ: NCC D2.15 & D3.3, AS1428.1 and NZ BC Compliance Doc. D1/AS1 1.3.2.

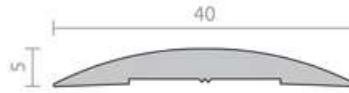
UK/EU: Approved Document M.

Fire AUS/NZ: NCC Spec. C3.4, AS1530.4 & AS/NZS 1905.1. NZ BC Compliance Doc. C/AS1 6.19.2(a) & App. C6.1.1.

UK/EU: Approved Document B. BS 476 Pt. 20 & 22 (similar to BS EN 1634-1).

FRL & FRR-/240/30 

 when used with a BAL rated door bottom seal in accordance with AS 3959.



RP95



A low profile [threshold plate](#) that can be used in conjunction with Raven [door bottom seals](#) to prevent rain, draught, noise and smoke infiltration.


Location: Door [sill](#).

Finish: Satin clear (silver) or bronze anodised aluminium (25µm).

Fixing: Screw fix or builders adhesive for concealed fixing (user determined). Colour matched zinc plated, cross recess head CSK S.T. screws supplied.

Sizes: Available in stock lengths.

Approvals

 Cert. GVY1.R37913

Access & Mobility AUS/NZ: NCC D2.15 & D3.3. AS1428.1.

NZ BC Compliance Doc. D1/AS1 1.3.2.


UK/EU: Approved Document M.

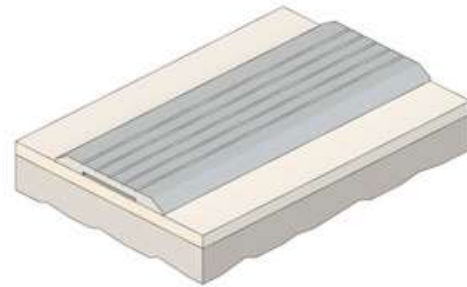
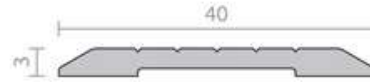
Fire AUS/NZ: NCC Spec. C3.4. AS1530.4 & AS/NZS 1905.1.

NZ BC Compliance Doc. C/AS1 6.19.2(a) & App. C6.1.1.

UK/EU: Approved Document B. BS 476 Pt. 20 & 22 (similar to BS EN 1634-1).

FRL & FRR-1240/30 and FD240. 

 when used with a BAL rated door bottom seal in accordance with AS 3959.



RP98



A heavy duty threshold ramp with a ribbed design which can be positioned back to back to form a two way threshold ramp conforming to NCC Pt. D2.15 Thresholds (b).

Can be used in conjunction with Raven [door bottom seals](#) to prevent rain, draughts, noise and smoke infiltration. Suitable for use with most floor pivots.

Ideal for commercial shop fronts providing a neat ramp detail between carpets or tiles at door ways.

Can also be used to provide a ramped frame for internal door mats.

Location: Door [sill](#).

Finish: Satin clear (silver) anodised aluminium (25µm).

Fixing: Screw fix. Zinc plated, cross recess head CSK S.T. screws supplied. Can be fastened with builders adhesive for concealed fixing.

Sizes: Available in stock lengths.
Specify longer length than doorway to allow for neat installation around door frame.

Approvals

Cert. GVYI.R37913

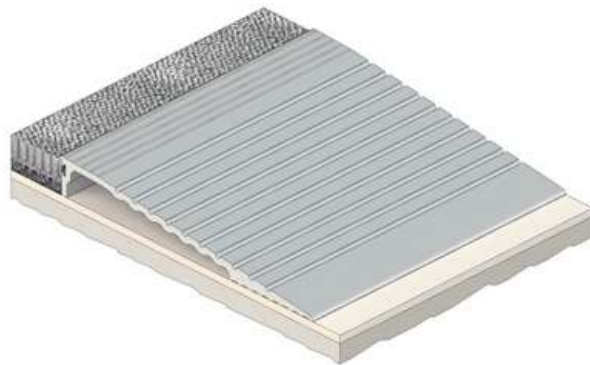
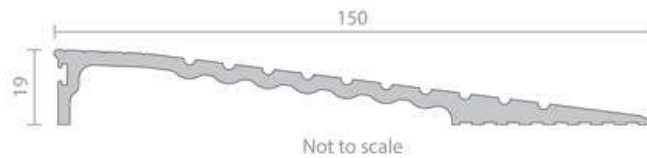
Access & Mobility AUS/NZ: NCC D2.15 & D3.3. AS1428.1.
NZ BC Compliance Doc. D1/AS1 1.3.2.

UK/EU: Approved Document M.

Fire AUS/NZ: NCC Spec. C3.4. AS1530.4 & AS/NZS 1905.1.
NZ BC Compliance Doc. C/AS1 6.19.2(a) & App. C6.1.1.
UK/EU: Approved Document B. BS 476 Pt. 20 & 22 (similar to BS EN 1634-1).

FRL & FRR-/240/30.

when used with a BAL rated door bottom seal in accordance with AS 3959.



RP112



A medium duty [threshold plate](#) which can be positioned back to back to form a two way threshold ramp conforming to NCC Pt. D2.15 Thresholds (b).

Can be used in conjunction with Raven [door bottom seals](#) to prevent rain, draughts, noise and smoke infiltration.

Can also be used to provide a ramped frame for internal door mats and tiles.


Location: Door sill.

Finish: Satin clear (silver) or bronze anodised aluminium (25µm).

Fixing: Screw fix. Colour matched zinc plated, cross recess head CSK S.T. screws supplied.

Sizes: Available in stock lengths.

Approvals

 Cert. GVYI.R37913


Access & Mobility AUS/NZ: NCC D2.15 & D3.3. AS1428.1.
NZ BC Compliance Doc. D1/AS1 1.3.2.

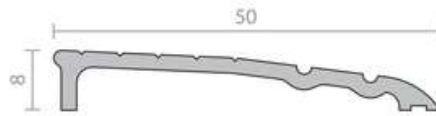
UK/EU: Approved Document M.

Fire AUS/NZ: NCC Spec. C3.4. AS1530.4 & AS/NZS 1905.1.
NZ BC Compliance Doc. C/AS1 6.19.2(a) & App. C6.1.1.

UK/EU: Approved Document B. BS 476 Pt. 20 & 22 (similar to BS EN 1634-1).

FRL & FRR -/240/30 and FD240. 

 when used with a BAL rated door bottom seal in accordance with AS 3959.



RP115



A low profile [threshold plate](#) that can be used in conjunction with Raven [door bottom seals](#) to prevent rain, draughts, noise and smoke infiltration. Suitable for use with most floor pivots.

Location: Door [sill](#).

Finish: Satin clear (silver) or bronze anodised aluminium (25µm).

Fixing: Screw fix or builders adhesive for concealed fixing (user determined). Colour matched zinc plated, cross recess head CSK S.T. screws supplied.

Sizes: Available in stock lengths.

Approvals


Access & Mobility AUS/NZ: NCC D2.15 & D3.3. AS1428.1. NZ BC Compliance Doc. D1/AS1 1.3.2.

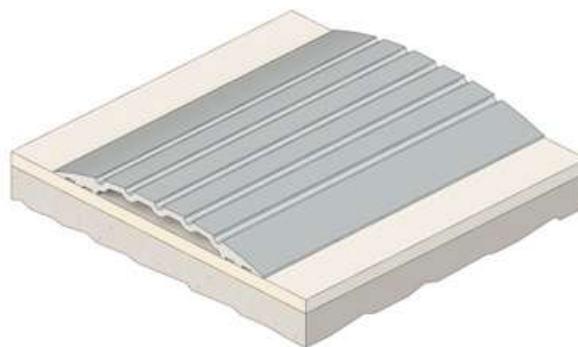
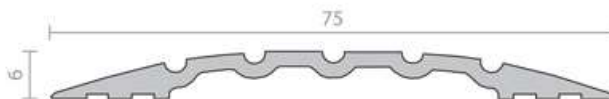
UK/EU: Approved Document M.

Fire AUS/NZ: NCC Spec. C3.4. AS1530.4 & AS/NZS 1905.1. NZ BC Compliance Doc. C/AS1 6.19.2(a) & App. C6.1.1.

UK/EU: Approved Document B. BS 476 Pt. 20 & 22 (similar to BS EN 1634-1).

FRL & FRR -/240/30 and FD180. 

BAL  when used with a BAL rated door bottom seal in accordance with AS 3959.



RP116



A low profile [threshold plate](#) that can be used in conjunction with Raven [door bottom seals](#) to prevent rain, draughts, noise and smoke infiltration. Suitable for use with most floor pivots.

Location: Door [sill](#).

Finish: Satin clear (silver) or bronze anodised aluminium (25µm).

Fixing: Screw fix or builders adhesive for concealed fixing (user determined). Colour matched zinc plated, cross recess head CSK S.T. screws supplied.

Sizes: Available in stock lengths.


Approvals

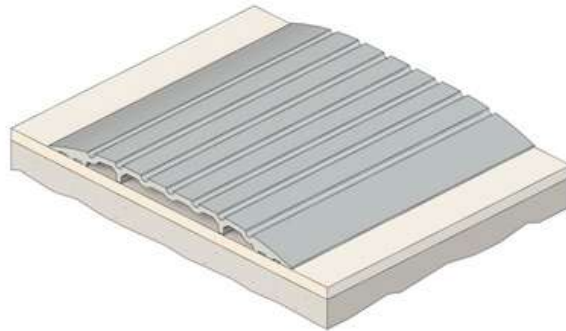
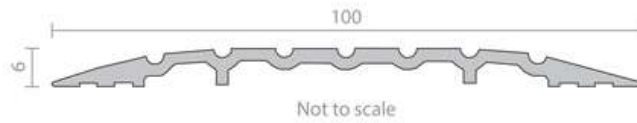
Access & Mobility AUS/NZ: NCC D2.15 & D3.3.
AS1428.1. NZ BC Compliance Doc. D1/AS1 1.3.2.
UK/EU: Approved Document M.

Fire AUS/NZ: NCC Spec. C3.4. AS1530.4 & AS/NZS 1905.1. NZ BC Compliance Doc. C/AS1 6.19.2(a) & App. C6.1.1.

UK/EU: Approved Document B. BS 476 Pt. 20 & 22 (similar to BS EN 1634-1).

FRL & FRR -/240/30 and FD180. 

BAL  when used with a BAL rated door bottom seal in accordance with AS 3959.



RP137



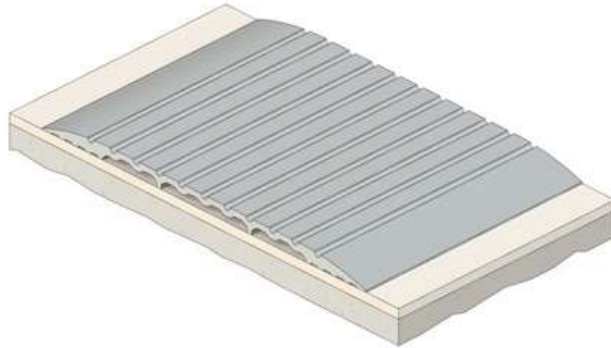
A low profile, extra wide heavy duty [threshold plate](#) that can be used in conjunction with Raven [door bottom seals](#) to prevent rain, draughts, noise and smoke infiltration. Ideal for larger style commercial door frames.

Location: Door [sill](#).


Finish: Satin clear (silver) anodised aluminium (25µm).

Fixing: Screw fix or builders adhesive for concealed fixing (user determined). Colour matched zinc plated, cross recess head CSK S.T. screws supplied.

Sizes: 3000mm, 2000mm, 1750mm, 1000mm.



Approvals

 Cert. GVI.R37913

Access & Mobility AUS/NZ: NCC D2.15 & D3.3. AS1428.1. NZ BC Compliance Doc. D1/AS1 1.3.2.

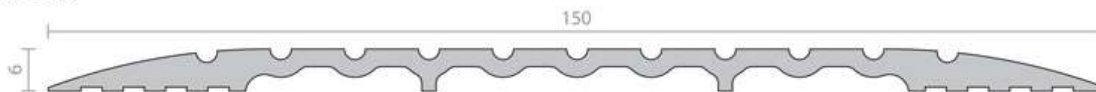
UK/EU: Approved Document M.

Fire AUS/NZ: NCC Spec. C3.4. AS1530.4 & AS/NZS 1905.1. NZ BC Compliance Doc. C/AS1 6.19.2(a) & App. C6.1.1.

UK/EU: Approved Document B. BS 476 Pt. 20 & 22 (similar to BS EN 1634-1).

FRL & FRR-/240/30 and FD180. 

BAL  when used with a BAL rated door bottom seal in accordance with AS 3959.



RP138



A heavy duty threshold ramp that can be used as a border for internal floor matting or be positioned back to back to form a two way threshold ramp conforming to NCC Pt. D2.15 Thresholds (b).

Ideal for larger style commercial door frames.

RP138 has been designed to accommodate a concealed screw fix through the door jambs.


Location: Door [sill](#).

Finish: Satin clear (silver) anodised aluminium (25µm).

Fixing: Screw fix or builders adhesive for concealed fixing (user determined). Colour matched zinc plated, cross recess head CSK S.T. screws supplied.

Sizes: 3000mm, 2500mm, 2000mm, 1250mm, 1000mm.

Approvals

 Cert. GVYI.R37913


Access & Mobility AUS/NZ: NCC D2.15 & D3.3. AS1428.1.
NZ BC Compliance Doc. D1/AS1 1.3.2.

UK/EU: Approved Document M.

Fire AUS/NZ: NCC Spec. C3.4. AS1530.4 & AS/NZS 1905.1.
NZ BC Compliance Doc. C/AS1 6.19.2(a) & App. C6.1.1.

UK/EU: Approved Document B. BS 476 Pt. 20 & 22 (similar to BS EN 1634-1).

FRL & FRR -/240/30 and FD180. 

 when used with a BAL rated door bottom seal in accordance with AS 3959.

